

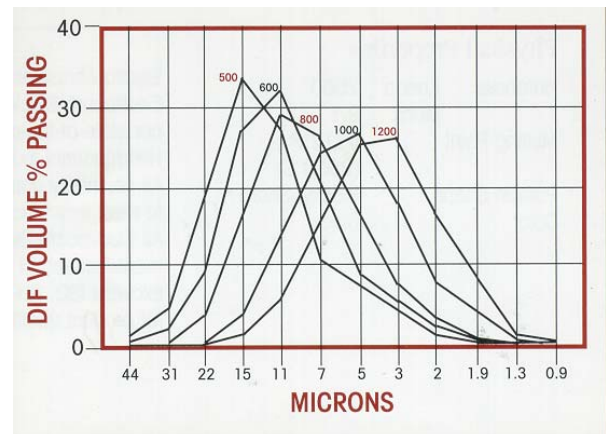
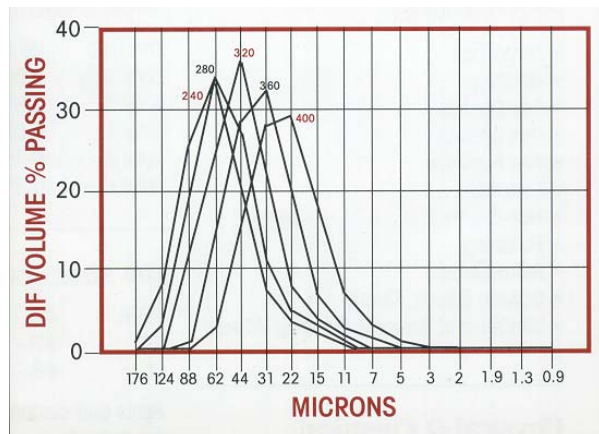
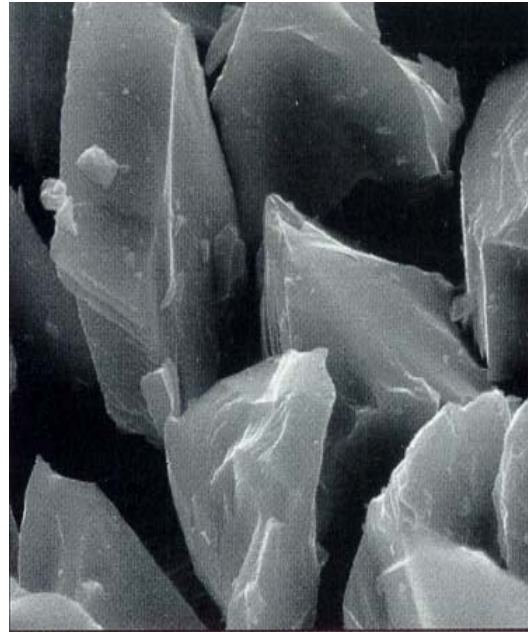
**ELECTRO ABRASIVES - Electrocarb® Black Silicon Carbide (SiC)**

Electro Abrasives manufactures Electrocarb® Black Silicon Carbide to the finest powder, in custom sizes, to meet all our customers needs. It is manufactured by a team of professionals dedicated to provide our customers the best in quality, service, and support.

**What is ElectroCarb® Black Silicon Carbide**

Electrocarb Black Silicon Carbide (SiC) is an extremely hard (Mohs 9.1 or 2550 Knoop) man made mineral that possesses high thermal conductivity (100 W/m-K). It also has high strength at elevated temperatures (of 1000° C, SiC is 7.5 times stronger than Al<sub>2</sub>O<sub>3</sub> SiC has a modulus of elasticity of 410 Gpa, with no decrease in strength up to 1600° C, and it does not melt at normal pressures but instead dissociates at 2600° C.

Electrocarb SiC contains some free silicon and carbon and is not as pure as green SiC. A common use of Electrocarb SiC is in abrasive wheels or refractories. It is manufactured in many complex bonded shapes, which are utilized for super-refractory purposes. Electrocarb SiC is also ideal for a wide variety of applications.



Electro Abrasives manufactures Electrocarb Black Silicon Carbide at our state-of-the-art, United States Headquarters in Buffalo, New York. All chemistry and sizing are controlled to meet exact customer requirements. All Electrocarb Black Silicon Carbide manufactured at Electro meets or exceeds ISO, FEPA, and JIS Standards for product quality.

**ELECTRO ABRASIVES - *Electrocarb® Black Silicon Carbide (SiC)*****Applications**

- |  |                          |
|--|--------------------------|
| ⇒ Aerospace                              | ⇒ Blasting               |
| ⇒ Composites                             | ⇒ Compounds              |
| ⇒ Kiln Furniture                         | ⇒ Lapping                |
| ⇒ Non-Slip                               | ⇒ Polishing              |
| ⇒ Refractories                           | ⇒ Sawing Silicon, Quartz |
| ⇒ Vitrified and Resinoid Grinding Wheels |                          |

**Physical and Chemical Composition****Physical Properties**

Hardness:	Knoop 2550
	Mohs 9.1
Melting Point:	4712° F (2600° C)
Particle Shape:	Blocky, Sharp
Color:	Black

**Typical Chemical Analysis**

Total SiC	98.5 %
Total SiO <sub>2</sub>	0.5 %
Total Si	0.3 %
Total Fe	0.08 %
Total Al	0.1 %
Total C	0.3 %

**Grit Sizes Available**

FEPA	#8 - F1600
ISO	#8 - 1600
JIS	#8 - 4000

Splits and custom sizes are available on request.

Manufacturer: **ELECTRO ABRASIVES CORPORATION**  
Supplier: **N. BUCHER AG**, Pfadackerstrasse 9, 8957 Spreitenbach/Switzerland  
Phone: ++41-56 418 19 90  
Fax: ++41-56 418 19 99  
<mailto:info@nbucheraq.com>

.....  
The information contained in this data sheet has been determined through the application of accepted engineering practice and is believed to be reliable. Since the conditions of application and use of our products are beyond our control, no warranty is expressed or implied regarding accuracy of the information, the results to be obtained from the use of the product, or that such use will not infringe on any patent. This Information is furnished with the express condition that you will make your own tests to determine the suitability of the product for you particular use.