

RODEL - SUBA Products

Description

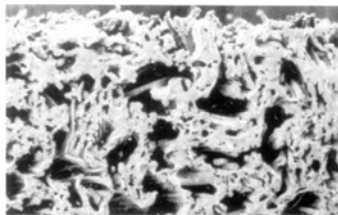
Rodel Suba products are polyurethane impregnated polyester felts specifically designed for stock removal in polishing operations which must yield in a high precision surface. Suba pads can be used in combination with each other and with Rodel final polishing pads to produce a haze-free, spectacular finish in dual or multi-step processes. Suba products are ideal for a wide variety of materials including semiconductor crystals, glass, ceramics, special metals, plastic and computer memory disks.

Specifications

Product	Compressibility	Hardness (Shore A)
Suba 500	7	72
Suba IV	15	61
Suba H-2	10	66

These values represent typical measurements. Actual values may vary in a range defined by product specifications.

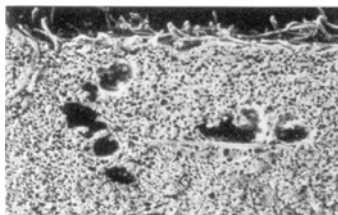
SUBA 500



Suba 500 is the industry standard for stock removal on silicon wafers. The open pore structure and reduced compressibility of Suba 500 consistently provide rapid, efficient removal with minimal roll-off.

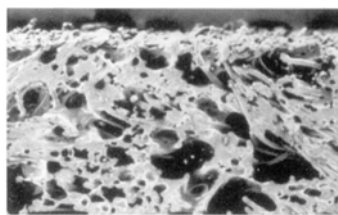
Samples

SUBA IV



Suba IV features an open pore structure and less aggressive urethane composition than the other Suba pads. These qualities make it an ideal primary polishing pad for low to medium pressure applications with fragile crystals or delicate surfaces. Suba IV other applications include stock removal of gallium arsenide, low temperature polishing of silicon and post-polish texturing of memory disks. Base pad for CMP.

SUBA H-2



Suba H-2 is a modification of Suba 500 with an increased urethane level. This product is particularly useful in high pressure applications with critical flatness requirements. The increased urethane content of Suba H-2 affects both porosity and hardness. Because of the reduced porosity, dressing is particularly important to prevent this product from glazing during use.